

# Appendix C Configuring Audio Input

## About this appendix

---

This Appendix explains how to use controls provided by your operating system to select and adjust the audio device from which Raven gets its input when acquiring new signals.

## Windows 98, 2000, and XP

---

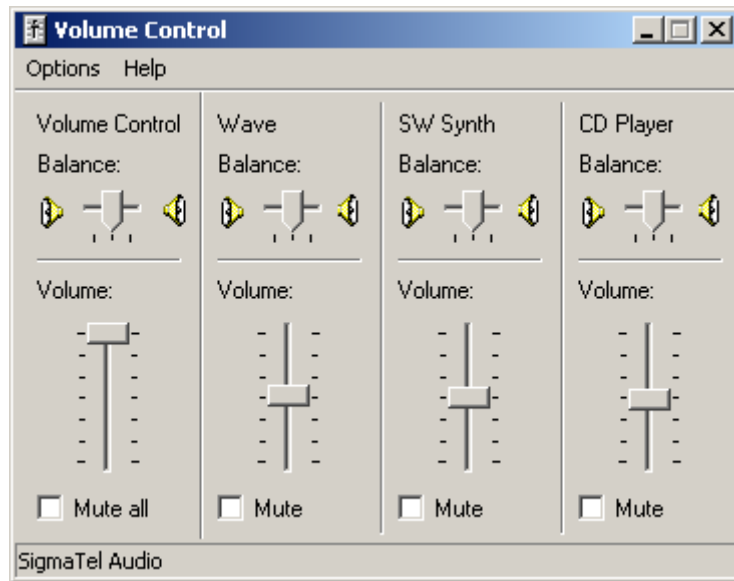
Depending on which version of the Windows operating system you're using, the icons and windows you see may appear slightly different from those shown here. However, the audio input controls function the same way in all versions of Windows.

To access the Windows audio input and output controls, double-click on the speaker icon that is displayed in the icon tray in the Windows task bar (Figure C.1).

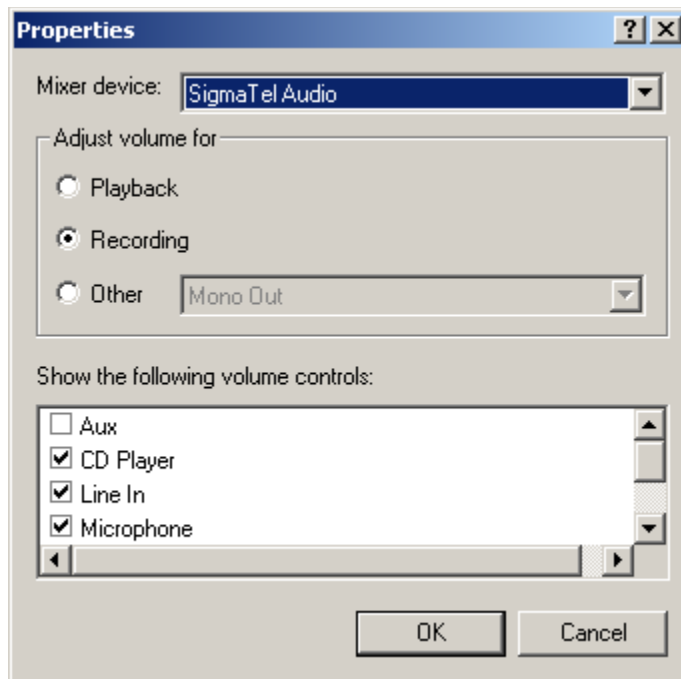


**Figure C.1.** The Windows icon tray. Double-click on the speaker icon to display the Windows audio input and output controls. (You may see different icons in the tray, depending on how your system is configured.)

The Volume Control dialog appears (Figure C.2), showing the volume and balance settings for various audio output devices. To display the controls for audio input devices, choose **Options > Properties**. In the Properties dialog that appears (Figure C.3), the Mixer device drop-down menu lists all of the sound cards installed in your computer, and lets you choose which one to use for audio input. On many computers, only a single sound card is installed; its name may differ from that shown in Figure C.3. Click on **Recording**, check the boxes next to all of the sound input devices that you may want to use on the list of volume controls at the bottom of the dialog box, then click **OK**.



**Figure C.2.** The Windows Volume Control dialog as it's initially displayed, showing Playback controls. Controls for different devices may be displayed, depending on system configuration.



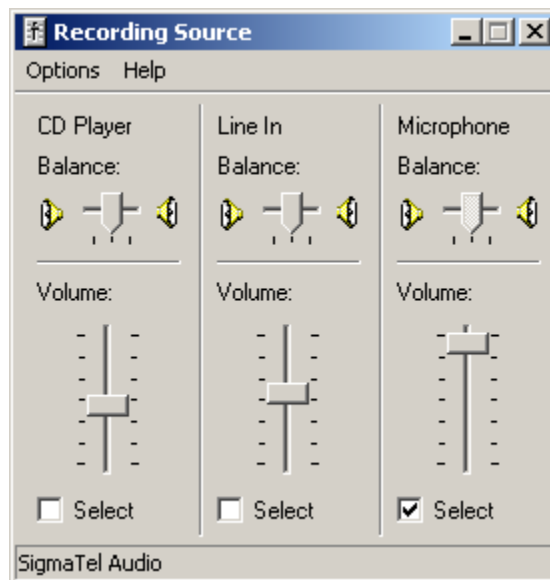
**Figure C.3.** The Properties dialog for the Windows audio playback and recording devices. The Mixer device name on your computer may differ from what's shown here.

The Volume Control dialog will be replaced by the Recording Source dialog (Figure C.4). To choose which recording source will be used, check the **Select** box for that device. To adjust the recording level, move the Volume slider control.



To record from a CD in Windows, you must select the recording source “Wave Out Mix” that appears in the audio playback Properties dialog (Figure C.3). After clicking OK, you should click the Select checkbox corresponding to Wave Out Mix in the Recording Control dialog.

Changes that you make in this dialog box are reflected immediately in the signal reaching Raven. You can thus start a recorder running in Raven and then use the Windows audio controls to adjust the recording level. See Chapter 4, “Signal Acquisition (Recording)” for a discussion of how to set the record level properly.



**Figure C.4.** The Recording Source controls. Controls for different devices may be displayed, depending on system configuration.

## Mac OS X

Launch the utility program called Audio MIDI Setup, located in / Applications/Utilities. Audio MIDI Setup is supplied with Mac OS X. Click on the **Audio Devices** tab to display controls for choosing a sound input device and setting the input (recording) level (Figure C.5).

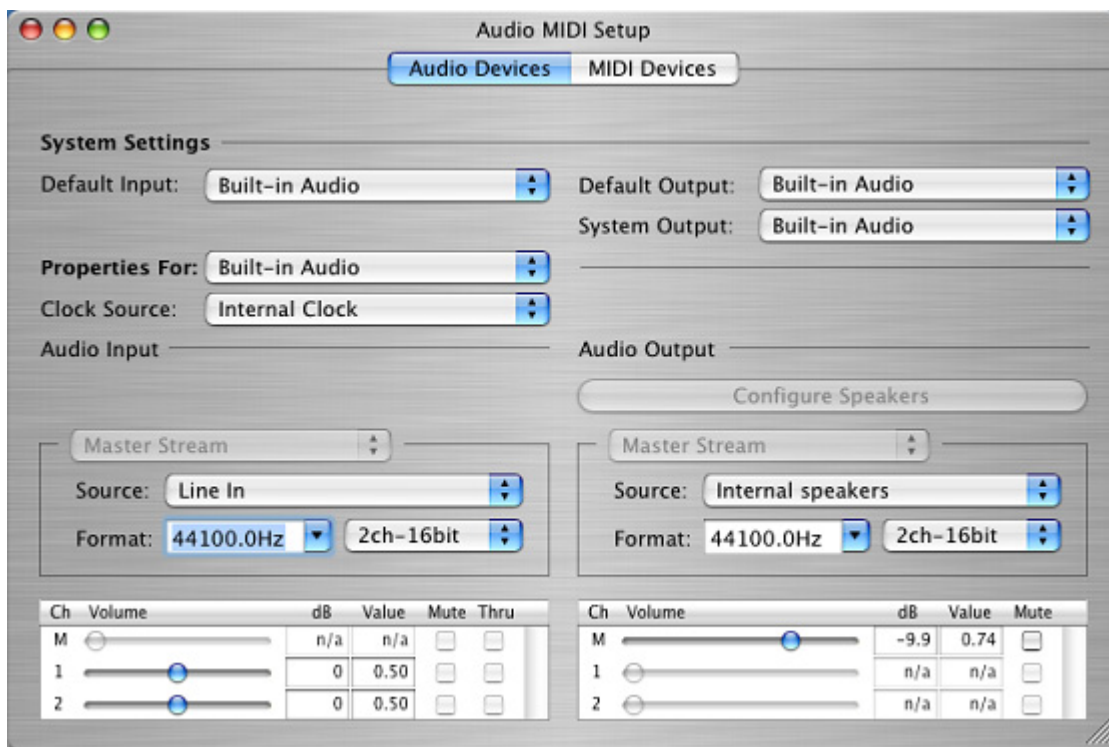
For **Default Input**, choose the sound input device that you plan to use with Raven. In most cases, this will be **Built-in Audio**. Under **Audio Input** (left

side of window), choose the **Source** to use for input to the audio device. In most cases, this will be Line In. The choices listed for **Source** correspond to physical input jacks or ports on the computer or external audio device. To adjust the recording level, move the Volume slider control.

Changes that you make to the recording level in Audio MIDI Setup are reflected immediately in the signal reaching Raven. You can thus start a recorder running in Raven and then use the Audio MIDI Setup controls to adjust the recording level. See [Chapter 4, “Signal Acquisition \(Recording\)”](#) for a discussion of how to set the record level properly.



Do not make changes to the audio input format (sample rate, number of channels, and sample size) in Audio MIDI Setup while Raven is running. Doing so may result in corrupted recordings in Raven.



**Figure C.5.** The Audio Devices screen in the Audio MIDI Setup program.